

Enrollment History by Class

	<u>1998/1999</u>	<u>1999/2000</u>	<u>2000/2001</u>	<u>2001/2002</u>	<u>2002/2003</u>	<u>2003/2004</u>	<u>2004/2005</u>	<u>2005/2006</u>	<u>2006/2007</u>	<u>2007/2008</u>	<u>2008/2009</u>	<u>2009/2010</u>	<u>2010/2011</u>
	(Actual FTE)	(Actual FTE)	(Actual FTE)	(Actual FTE)	(Actual FTE)	(Actual FTE)	(Actual FTE)	(Actual FTE)	(Actual FTE)	(Actual FTE)	(Actual FTE)	(Actual FTE)	January 2011
Class of 1999	91.18												
Class of 2000	95.67	94.93											
Class of 2001	95.00	84.09	83.31										
Class of 2002	103.11	101.87	92.53	95.89									
Class of 2003	98.78	92.44	77.56	77.73	80.78								
Class of 2004	103.78	96.00	94.44	91.00	94.44	101.07							
Class of 2005	95.78	96.89	98.57	101.90	104.68	108.07	107.22						
Class of 2006	103.00	90.33	90.56	96.26	90.31	90.25	94.22	96.66					
Class of 2007	49.44	92.89	98.06	89.32	85.76	85.33	88.61	89.11	99.16				
Class of 2008		39.67	91.44	93.44	106.97	97.02	100.06	99.99	104.91	107.17			
Class of 2009			43.22	81.61	83.78	90.56	85.30	78.33	82.44	81.11	75.78		
Class of 2010				48.94	84.44	94.67	93.00	80.89	92.78	87.49	83.38	75.64	
Class of 2011					44.89	91.11	85.33	84.56	82.44	81.67	67.78	65.53	70.72
Class of 2012						47.89	96.33	96.11	94.33	87.90	80.13	75.22	76.75
Class of 2013							42.67	84.22	85.78	92.00	92.11	92.94	99.44
Class of 2014								49.32	88.22	90.22	85.94	84.11	91.00
Class of 2015									36.73	78.26	80.16	85.98	78.04
Class of 2016										48.46	94.64	87.40	86.09
Class of 2017											36.89	79.29	82.92
Class of 2018												46.50	84.00
Class of 2019													46.50
Total	835.74	789.11	769.69	776.09	776.05	805.97	792.74	759.19	766.79	754.28	696.81	692.61	715.46

College Place Public Schools

11-Year Enrollment History

FTE - Actual Annual Average

Grade/Year	95-96	96-97	97-98	98-99	99- 00	00-01	01-02	02-03	03-04	04-05	05-06	06-07	07-08	08-09
K	50.06	53.67	51.67	49.44	39.67	43.22	48.94	44.89	47.89	42.56	49.32	36.73	48.46	36.89
1	100.78	103.89	98.67	103.00	92.89	91.44	81.61	84.44	91.11	96.22	84.22	88.22	78.26	94.64
2	113.11	106.57	108.33	95.78	90.33	98.06	93.44	83.78	94.67	85.44	96.11	85.78	90.22	80.16
3	101.33	104.12	94.89	103.78	96.89	90.56	89.32	106.97	90.56	92.89	84.56	94.33	92.00	85.94
4	105.33	100.64	109.78	98.78	96.00	98.57	96.26	85.76	97.02	85.30	80.89	82.44	87.90	92.11
5	103.34	105.02	92.33	103.11	92.44	94.44	101.90	90.31	85.33	99.95	78.33	92.78	81.67	80.13
6	104.00	101.33	107.78	95.00	101.87	77.56	91.00	104.68	90.25	88.61	99.99	82.44	87.49	67.78
7	83.00	98.93	93.89	95.67	84.09	92.53	77.73	94.44	108.07	94.11	89.11	104.91	81.11	83.38
8	81.13	92.44	95.22	91.18	94.93	83.31	95.89	80.78	101.07	107.33	96.66	99.16	107.17	75.78
K-8 Total	842.08	866.61	852.56	835.74	789.11	769.69	776.09	776.05	805.97	792.41	759.19	766.79	754.28	696.81
9 - 12*				309.91	288.34	371.08	366.52	388.24	413.90	415.15	402.61	387.00	404.97	394.75

* Non High District - This is the CPPS high school student count provided by WWSD

Bilingual Enrollment History

										<u>9 month</u>	
<u>Davis</u>	<u>Sept.</u>	<u>Oct.</u>	<u>Nov.</u>	<u>Dec.</u>	<u>Jan.</u>	<u>Feb.</u>	<u>March</u>	<u>April</u>	<u>May</u>	<u>Average</u>	
2000/2001	120	118	119	122	120	117	113	111	110	116.67	
2001/2002	120	117	114	117	112	114	115	121	120	116.67	
2002/2003	107	108	108	107	103	102	105	109	108	106.33	
2003/2004	117	114	114	116	115	112	113	110	111	113.56	
2004/2005	126	126	128	126	122	122	117	118	120	122.78	
2005/2006	99	98	98	96	97	97	99	100	100	98.22	
2006/2007	87	84	85	82	83	82	81	83	85	83.56	
2007/2008	95	92	93	93	93	92	93	94	96	93.44	
2008/2009	64	92	95	97	97	98	98	98	98	93.00	
2009/2010	102	101	104	104	103	106	108	108	107	104.78	
2010/2011	108										
										<u>9 month</u>	
<u>Meadow Brook</u>	<u>Sept.</u>	<u>Oct.</u>	<u>Nov.</u>	<u>Dec.</u>	<u>Jan.</u>	<u>Feb.</u>	<u>March</u>	<u>April</u>	<u>May</u>	<u>Average</u>	
2000/2001	70	63	61	61	62	60	59	62	61	62.11	
2001/2002	68	45	44	42	42	41	42	43	43	45.56	
2002/2003	51	51	50	49	46	43	48	48	47	48.11	
2003/2004	49	49	50	50	50	50	48	48	48	49.11	
2004/2005	42	43	43	42	42	41	40	42	42	41.89	
2005/2006	48	47	49	48	48	45	45	45	45	46.67	
2006/2007	34	35	36	34	34	35	35	35	36	34.89	
2007/2008	41	44	42	43	43	42	42	42	42	42.33	
2008/2009	41	40	43	43	43	40	39	39	39	40.78	
2009/2010	39	38	40	42	42	41	44	46	48	42.22	
2010/2011	48										
										<u>9 month</u>	
<u>Sager</u>	<u>Sept.</u>	<u>Oct.</u>	<u>Nov.</u>	<u>Dec.</u>	<u>Jan.</u>	<u>Feb.</u>	<u>March</u>	<u>April</u>	<u>May</u>	<u>Average</u>	
2000/2001	19	16	16	16	16	16	17	19	18	17.00	
2001/2002	15	14	14	11	11	10	10	10	10	11.67	
2002/2003	11	11	11	12	10	10	11	12	12	11.11	
2003/2004	25	24	24	24	23	23	23	22	23	23.44	
2004/2005	19	19	19	19	19	18	19	20	20	19.11	
2005/2006	21	21	21	19	19	19	20	20	20	20.00	
2006/2007	8	23	23	23	24	21	23	23	25	21.44	
2007/2008	17	17	17	17	17	16	17	18	18	17.11	
2008/2009	14	15	15	15	16	15	14	14	14	14.67	
2009/2010	17	17	16	15	15	15	14	15	15	15.44	
2010/2011	14										
										<u>9 month</u>	
<u>District Wide</u>	<u>Sept.</u>	<u>Oct.</u>	<u>Nov.</u>	<u>Dec.</u>	<u>Jan.</u>	<u>Feb.</u>	<u>March</u>	<u>April</u>	<u>May</u>	<u>Average</u>	Budgeted
1998/1999	158	192	185	181	186	181	185	188	188	182.67	
1999/2000	203	183	179	181	175	174	173	178	183	181.00	
2000/2001	207	197	196	199	198	193	189	192	189	195.56	
2001/2002	203	176	172	170	165	165	167	174	173	173.89	180
2002/2003	169	170	169	168	159	155	164	169	167	165.56	170
2003/2004	191	187	188	190	188	185	184	180	182	186.11	160
2004/2005	187	188	190	187	183	181	176	180	182	183.78	178
2005/2006	168	166	168	163	164	161	164	165	165	164.89	178
2006/2007	129	142	144	139	141	138	139	141	146	139.89	164
2007/2008	153	153	152	153	153	150	152	154	156	152.89	135
2008/2009	119	147	153	155	156	153	151	151	151	148.44	145
2009/2010	158	156	160	161	160	162	166	169	170	162.44	140
2010/2011	170										173

College Place Public Schools Special Education Enrollment History

Pre-School

	<u>Sept.</u>	<u>Oct.</u>	<u>Nov.</u>	<u>Dec.</u>	<u>Jan.</u>	<u>Feb.</u>	<u>March</u>	<u>April</u>	<u>May</u>	<u>Average</u>
2000/2001	7	11	12	13	15	14	15	17	16	13.33
2001/2002	12	13	13	13	13	14	16	18	19	14.56
2002/2003	9	7	8	8	9	12	12	12	12	9.89
2003/2004	7	9	10	9	9	9	9	9	12	9.22
2004/2005	8	8	11	11	11	11	10	11	12	10.33
2005/2006	6	6	8	8	8	9	9	11	12	8.56
2006/2007	8	10	10	11	9	10	10	13	12	10.33
2007/2008	6	9	12	13	13	14	14	16	16	12.56
2008/2009	9	9	10	11	11	13	14	15	19	12.33
2009/2010	16	14	16	16	16	18	19	19	19	17.00
2010/2011	19									

Davis

	<u>Sept.</u>	<u>Oct.</u>	<u>Nov.</u>	<u>Dec.</u>	<u>Jan.</u>	<u>Feb.</u>	<u>March</u>	<u>April</u>	<u>May</u>	<u>Average</u>
2001/2002	38	40	42	42	46	47	44	48	51	44.22
2002/2003	36	44	47	47	43	41	41	41	41	42.33
2003/2004	33	35	37	38	39	42	46	47	48	40.56
2004/2005	41	42	43	43	41	39	40	40	43	41.33
2005/2006	35	35	37	36	35	37	41	42	41	37.67
2006/2007	31	31	32	32	31	32	34	36	34	32.56
2007/2008	31	31	39	41	40	40	39	41	40	38.00
2008/2009	31	34	34	34	34	36	36	40	39	35.33
2009/2010	39	39	40	40	40	40	40	40	39	39.67
2010/2011	23									

Meadowbrook

	<u>Sept.</u>	<u>Oct.</u>	<u>Nov.</u>	<u>Dec.</u>	<u>Jan.</u>	<u>Feb.</u>	<u>March</u>	<u>April</u>	<u>May</u>	<u>Average</u>
2001/2002	29	30	30	28	29	30	31	29	30	29.56
2002/2003	36	38	41	40	40	39	42	42	41	39.89
2003/2004	43	46	47	47	47	43	43	41	42	44.33
2004/2005	33	35	37	34	32	33	33	35	34	34.00
2005/2006	38	42	42	43	40	37	39	39	39	39.89
2006/2007	35	35	35	34	34	34	35	34	34	34.44
2007/2008	35	38	37	38	39	39	39	38	38	37.89
2008/2009	30	32	34	35	35	34	32	33	33	33.11
2009/2010	32	34	35	35	35	34	34	36	35	34.44
2010/2011	38									

Sager

	<u>Sept.</u>	<u>Oct.</u>	<u>Nov.</u>	<u>Dec.</u>	<u>Jan.</u>	<u>Feb.</u>	<u>March</u>	<u>April</u>	<u>May</u>	<u>Average</u>
2001/2002	21	20	20	21	21	20	21	20	19	20.33
2002/2003	13	14	15	17	16	17	15	14	15	15.11
2003/2004	16	20	19	19	21	22	22	22	23	20.44
2004/2005	26	24	25	25	27	25	24	25	23	24.89
2005/2006	26	26	26	24	25	25	22	22	23	24.33
2006/2007	34	34	33	31	30	28	29	29	29	30.78
2007/2008	27	28	30	30	30	30	30	28	28	29.00
2008/2009	19	18	18	17	17	19	19	19	19	18.33
2009/2010	21	21	22	21	20	21	21	23	23	21.44
2010/2011	20									

District Wide

	<u>Sept.</u>	<u>Oct.</u>	<u>Nov.</u>	<u>Dec.</u>	<u>Jan.</u>	<u>Feb.</u>	<u>March</u>	<u>April</u>	<u>May</u>	<u>Average</u>	<u>Budgeted</u>
1998/1999	96	105	104	102	100	107	113	117	118	106.89	
1999/2000	97	101	102	109	110	108	113	114	117	107.89	
2000/2001	100	105	110	113	113	112	102	100	98	105.89	
2001/2002	100	103	105	104	109	111	112	115	119	108.67	100
2002/2003	94	103	111	112	108	109	110	109	115	107.89	105
2003/2004	99	110	113	113	116	116	120	119	125	114.56	105
2004/2005	108	109	116	113	111	108	107	111	112	110.56	110
2005/2006	105	109	113	111	108	108	111	114	115	110.44	110
2006/2007	108	110	110	108	104	104	108	112	109	108.11	110
2007/2008	99	106	118	122	122	123	122	123	122	117.44	105
2008/2009	89	93	96	97	97	102	101	107	110	99.11	117
2009/2010	108	108	113	112	111	113	114	118	116	112.56	94
2010/2011	100	0	0	0	0	0	0	0	0		110

College Place Public Schools

October 1st - Head Count Data

School Year	1989-1990	1990-1991	1991-1992	1992-1993	1993-1994	1994-1995	1995-1996	1996-1997	1997-1998	1998-1999	1999-2000	2000-2001	2001-2002	2002-2003	2003-2004	2004-2005	2005-2006	2006-2007	2007-2008	2007-2008	2008-2009	2009-2010	
	Oct-89	Oct-90	Oct-91	Oct-92	Oct-93	Oct-94	Oct-95	Oct-96	Oct-97	Oct-98	Oct-99	Oct-00	Oct-01	Oct-02	Oct-03	Oct-04	Oct-05	Oct-06	Oct-07	Oct-08	Oct-09	Oct-10	
Kindergarten	93	97	82	84	89	88	98	107	101	99	80	86	99	92	97	90	101	73	100	75	75	91	
1st grade	98	102	94	98	114	109	100	106	100	102	92	93	85	83	90	97	81	91	78	95	95	80	
2nd grade	78	93	104	97	93	97	114	108	113	101	97	101	92	83	93	87	96	88	88	81	81	90	
3rd grade	77	87	99	105	99	100	101	105	97	106	96	93	89	108	90	95	83	96	94	88	88	89	
4th grade	76	81	103	99	104	100	105	105	106	101	98	97	98	88	96	86	82	82	89	91	91	82	
5th grade	58	86	79	106	96	93	104	109	97	102	90	96	102	93	86	106	77	93	84	82	82	91	
6th grade	71	60	74	72	100	80	110	101	110	94	103	79	91	105	91	90	100	84	88	68	68	74	
7th grade	64	61	69	65	79	84	80	102	93	99	85	94	75	92	107	90	91	106	80	83	83	68	
8th grade	46	67	54	67	56	76	86	92	101	91	95	86	95	82	98	107	96	100	108	75	75	76	
Totals	661	734	758	793	830	827	898	935	918	895	836	825	826	826	848	848	807	813	825	809	738	738	741

Basic Education Enrollment Historical Data

	2001/2002		2002/2003		2003/2004		2004/2005		2005/2006		2006/2007		2007/2008		2008/2009	
	Budgeted	Actual Annual Average	Budgeted	Actual Annual Average	Budgeted	YTD Average	Budgeted	YTD Average	Budgeted	YTD Average	Budgeted	Annual Average	Budgeted	Annual Average	Budgeted	Annual Average
Kindergarten	42.00	48.94	44.00	44.89	43.00	47.89	43.00	42.67	43.00	49.32	44.00	36.73	35.00	48.46	45.00	36.89
1st grade	84.00	81.61	96.00	84.44	82.00	91.11	90.00	96.33	90.00	84.22	97.00	88.22	72.00	78.26	95.00	94.64
2nd grade	91.00	93.44	80.00	83.78	82.00	94.67	91.00	85.33	95.00	96.11	82.00	85.78	88.00	90.22	78.00	80.16
3rd grade	95.00	89.32	92.00	106.97	81.00	90.56	94.00	93.00	85.00	84.56	95.00	94.33	84.00	92.00	89.00	85.94
4th grade	87.00	96.26	87.00	85.76	103.00	97.02	90.00	85.30	93.00	80.89	82.00	82.44	94.00	87.90	91.00	92.11
5th grade	97.00	101.90	96.00	90.31	84.00	85.33	97.00	100.06	83.00	78.33	81.00	92.78	82.00	81.67	87.00	80.13
6th grade	90.00	91.00	99.00	104.68	89.00	90.25	85.00	88.61	98.00	99.99	78.00	82.44	93.00	87.49	80.00	67.78
7th grade	73.00	77.73	88.00	94.44	102.00	108.07	90.00	94.22	85.00	89.11	98.00	104.91	83.00	81.11	86.00	83.38
8th grade	91.00	95.89	76.00	80.78	92.00	101.07	108.00	107.22	89.00	96.66	88.00	99.16	103.00	107.17	81.00	75.78
Totals	750.00	776.09	758.00	776.05	758.00	805.97	788.00	792.74	761.00	759.19	745.00	766.79	734.00	754.28	732.00	696.81
	Budget FTE	Actual May-02	HC	Actual May-03	HC	Actual May-04	HC	Actual May-05	HC	Actual May-06	Actual - May 2007		Actual - May 2008		Actual - May 2009	
	339	338.89	326	351.75	308	364.50	363	354.50	373	323.80	HC	FTE	HC	FTE	HC	FTE
	247	263.43	268	255.58	256	231.12	227	232.11	263	262.32	343	304.50	355	305.59	337	295.64
	164	176.64	164	176.00	194	214.34	198	206.00	185	183.39	251	251.00	257	255.18	235	233.51
	750	778.96	758	783.33	758	809.96	788	792.61	821	769.51	798	758.54	802	749.49	731	687.31
											D		D		D	
											MB		MB		MB	
											S		S		S	

Bilingual Enrollment History by Class

As of 02/18/2009

	2007/2008 (Actual FTE)	2008/2009 Februrary 2009	2009/2010 Budgeted	<u>Grade</u>	Transitioning out via WLPT testing 05/29/09
Class of 2008	12.00				
Class of 2009	4.00	4.00			
Class of 2010	11.00	11.00	8.00	8	3
Class of 2011	17.00	11.00	9.00	7	2
Class of 2012	14.00	13.00	11.00	6	2
Class of 2013	22.00	16.00	11.00	5	5
Class of 2014	21.00	21.00	17.00	4	4
Class of 2015	20.00	26.00	20.00	3	6
Class of 2016	29.00	30.00	30.00	2	0
Class of 2017		21.00	21.00	1	0
Class of 2018			20.00	k	
Class of 2019					
LifeSkills					
Total	150.00	153.00	147.00		

<u>08/09 Actual Feb 2009 Student FTE</u>		
Sager	15.00	55.00
Meadow Brook	<u>40.00</u>	
Davis		<u>98.00</u>
	Total	153.00

<u>09/10 Budgeted Student FTE</u>		
Sager	17.00	56.00
Meadow Brook	<u>39.00</u>	
Davis		<u>91.00</u>
	Total	147.00

Special Education Enrollment History b

As of 09/10/2009

	<u>2007/2008</u>	<u>2009-2010</u>	<u>2009/2010</u>	<u>Grade</u>
	(Actual FTE)	Budgeted	Sep-09	
Class of 2008	20.00			
Class of 2009	7.00			
Class of 2010	13.00	12.00	12.00	8
Class of 2011	11.00	8.00	7.00	7
Class of 2012	13.00	10.00	10.00	6
Class of 2013	14.00	14.00	14.00	5
Class of 2014	7.00	7.00	5.00	4
Class of 2015	8.00	10.00	14.00	3
Class of 2016	8.00	9.00	11.00	2
Class of 2017	14.00	7.00	10.00	1
Class of 2018		4.00	5.00	k
Class of 2019		9.00	14.00	P
LifeSkills	8.00	5.00	6.00	LS
Total	123.00	95.00	108.00	

Enrollment History by Class

	<u>2005/2006</u>	<u>2006/2007</u>	<u>2007/2008</u>	<u>2008/2009</u>	<u>2009/2010</u>	<u>2009-2010</u>	<u>Grade</u>
	(Actual FTE)	(Actual FTE)	(Actual FTE)	(Actual FTE)	11/02/09	Budgeted	
Class of 1999							
Class of 2000							
Class of 2001							
Class of 2002							
Class of 2003							
Class of 2004							
Class of 2005							
Class of 2006	96.66						
Class of 2007	89.11	99.16					
Class of 2008	99.99	104.91	107.17				
Class of 2009	78.33	82.44	81.11	75.78			
Class of 2010	80.89	92.78	87.49	83.38	76.33	83.00	8th
Class of 2011	84.56	82.44	81.67	67.78	66.73	67.00	7th
Class of 2012	96.11	94.33	87.90	80.13	74.09	80.00	6th
Class of 2013	84.22	85.78	92.00	92.11	90.67	91.00	5th
Class of 2014	49.32	88.22	90.22	85.94	83.00	86.00	4th
Class of 2015		36.73	78.26	80.16	87.23	80.00	3rd
Class of 2016			48.46	94.64	88.07	92.00	2nd
Class of 2017				36.89	80.67	71.00	1st
Class of 2018					45.33	34.00	K
Total	759.19	766.79	754.28	696.81	692.12	684.00	

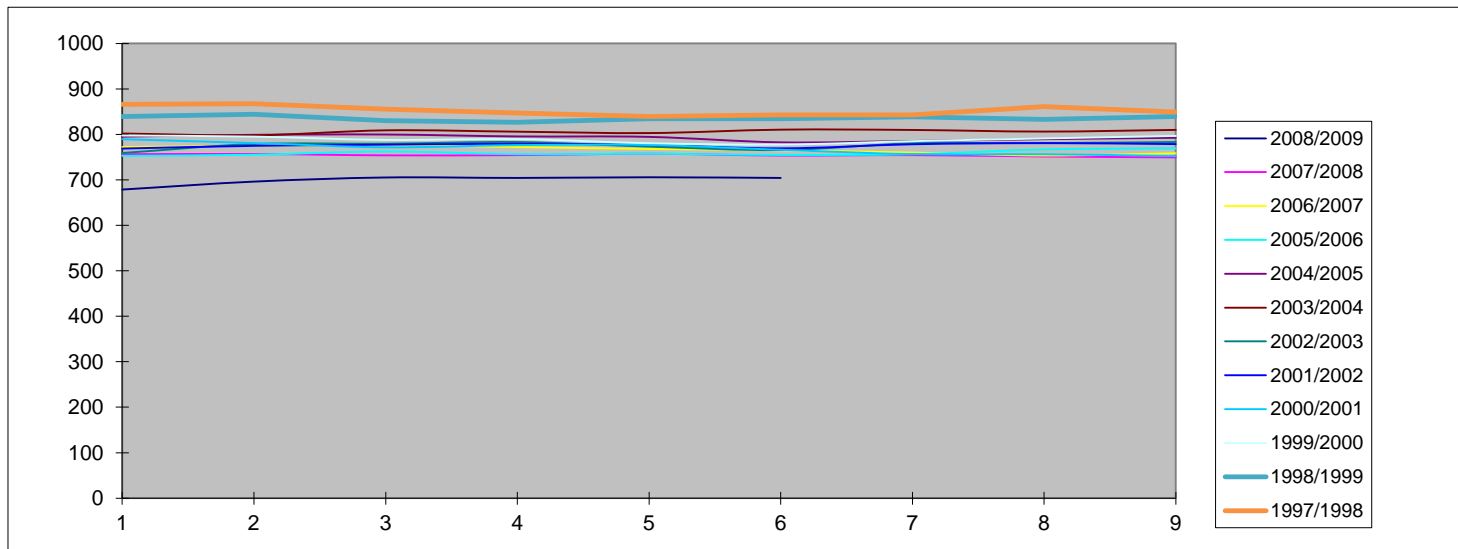
Budgeted #'s 761.00 745.00 734.00 732.00 684.00

<u>08/09 Actual Average FTE</u>	
Sager	159.16
Meadow Brook	<u>240.02</u>
Davis	<u>297.63</u>
Total	696.81

<u>09/10 Actual Student FTE</u>	
Sager	143.06
Meadow Broo	<u>247.76</u>
Davis	301.30
Total	692.12

College Place Public Schools - Enrollment (FTE) Comparison by Month/Year

	September	October	November	December	January	February	March	April	May	Annual Average
2008/2009	678.77	696.27	705.32	704.32	705.82	704.36				
2007/2008	756.55	756.95	754.00	754.52	757.52	753.56	754.49	751.49	749.49	754.29
2006/2007	772.38	774.85	776.35	772.10	768.10	765.10	760.10	753.60	758.54	766.79
2005/2006	752.92	755.42	762.42	756.52	757.52	754.92	756.51	767.01	769.51	759.19
2004/2005	795.16	799.16	799.82	795.60	794.60	782.60	785.60	789.61	792.61	792.75
2003/2004	802.07	798.07	809.02	806.02	803.02	810.52	809.85	806.28	809.96	806.09
2002/2003	759.12	778.90	779.61	783.21	773.21	765.73	780.47	780.97	783.33	776.06
2001/2002	768.90	774.90	777.40	779.40	776.90	769.37	778.37	780.87	778.76	776.10
2000/2001	789.50	781.00	771.70	776.50	776.70	766.20	756.70	756.40	752.50	769.69
1999/2000	797.60	795.20	787.90	789.70	780.70	777.70	785.20	791.20	796.80	789.11
1998/1999	839.50	844.50	830.30	826.80	834.80	834.30	838.80	833.30	839.30	835.73
1997/1998	866.50	867.50	855.50	847.50	839.50	843.00	843.00	861.00	849.50	852.56



Basic Education Enrollment Historical Data

	1998/1999		1999/2000		2000/2001	
	Budgeted	Actual Annual Average	Budgeted	Actual Annual Average	Budgeted	Actual Annual Average
Kindergarten	50.00	49.44	50.00	39.67	40.00	43.22
1st grade	100.00	103.00	96.00	92.89	80.00	91.44
2nd grade	100.00	95.78	103.00	90.33	93.00	98.06
3rd grade	100.00	103.78	90.00	96.89	85.00	90.56
4th grade	98.00	98.78	101.00	96.00	97.00	98.57
5th grade	105.00	103.11	97.00	92.44	94.00	94.44
6th grade	88.00	95.00	102.00	101.87	94.00	77.56
7th grade	98.00	95.67	90.00	84.09	98.00	92.53
8th grade	91.00	91.18	91.00	94.93	83.00	83.31
Totals	830.00	835.74	820.00	789.11	764.00	769.69

Basic Ed Pre-School Enrollment

Pres-School

	<u>Sept.</u>	<u>Oct.</u>	<u>Nov.</u>	<u>Dec.</u>	<u>Jan.</u>	<u>Feb.</u>	<u>March</u>	<u>April</u>	<u>May</u>	<u>Average</u>
2001/2002	-	-								
2002/2003	19		26	25	25	26	27	26	28	25.25
2003/2004	28	27	28	26	26	26	26	26	26	26.56
2004/2005	28	28	28	28	27	28	28	28	28	27.89
2005/2006	27	28	28	28	27	28	28	28	27	27.67
2006/2007	27	28	28	28	27	28	28	28	28	27.78
2007/2008										

|